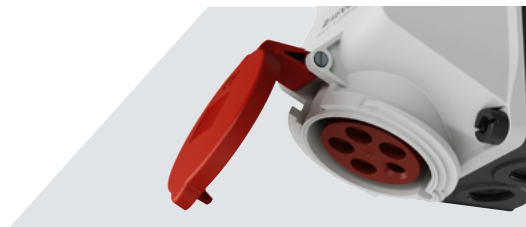


# DUOi SWITCHED & INTERLOCKED

THE NEW SWITCHED AND INTERLOCKED WALL MOUNTED RECEPTACLE IN 16 AND 32 A WITH VOLTAGE INDICATOR.

 **MENNEKES**  
MY POWER CONNECTION



 You can find more information on our website

# DUOi SWITCHED & INTERLOCKED

THE NEW SWITCHED AND INTERLOCKED WALL MOUNTED RECEPTACLE IN 16 AND 32 A WITH VOLTAGE INDICATOR.

**MENNEKES**  
MY POWER CONNECTION

[HOME](#) [CONTENTS](#) [DUOi WALL MOUNTED RECEPTACLE](#) [INSTALLATION](#) [VOLTAGE INDICATOR](#) [OPERATION](#) [MATERIALS](#) [CONTACT PERSONS](#)

## Contents



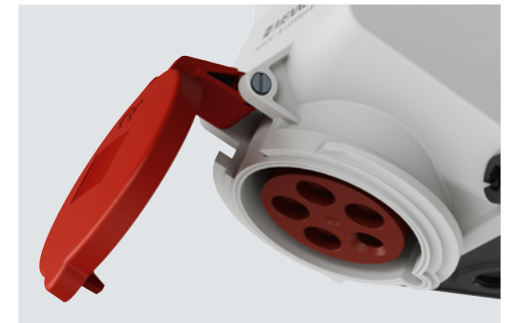
**Our DUOi wall mounted receptacle**



**Easy, time-saving installation**



**Convenient voltage indicator**



**Safe and easy operation**



**Robust, durable materials**



**Contact persons**

# DUOi SWITCHED & INTERLOCKED

THE NEW SWITCHED AND INTERLOCKED WALL MOUNTED RECEPTACLE IN 16 AND 32 A WITH VOLTAGE INDICATOR.

 **MENNEKES**  
MY POWER CONNECTION

[HOME](#) [CONTENTS](#) [DUOi WALL MOUNTED RECEPTACLE](#) [INSTALLATION](#) [VOLTAGE INDICATOR](#) [OPERATION](#) [MATERIALS](#) [CONTACT PERSONS](#)

## Our DUOi wall mounted receptacle Improved, with fantastic new features

Machines and systems operate day and night, conveyor belts run without pause and cranes work nonstop to lift and carry materials weighing tons. Container ports, shipyards, factories, mines, food processing and warehouses are always bustling with activity. Everywhere there's a need for safe reliable power in order to work smoothly and cost-effectively.

This is where our switched and interlocked DUO wall mounted receptacles come in. They've been popular for years across a wide variety of industries and applications. Now we've completely redesigned and optimised this family of receptacles, which come in 16 A and 32 A versions with 3, 4, or 5 poles. The result is the DUOi wall mounted receptacle with fantastic new features. See for yourself!



# DUOi SWITCHED & INTERLOCKED

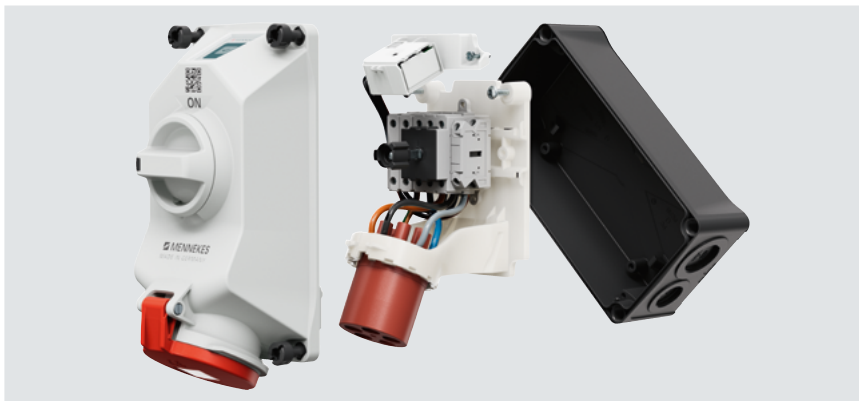
THE NEW SWITCHED AND INTERLOCKED WALL MOUNTED RECEPTACLE IN 16 AND 32 A WITH VOLTAGE INDICATOR.

## Easy, time-saving installation

It's important for a product to be easy, time-saving and cost effective to install and perform reliably. We have therefore designed our switched and interlocked DUOi wall mounted receptacles with lots of helpful new features:

### Enclosure base with outstanding features

The enclosure base can be rotated through 180 degrees. This lets you flexibly use the M32 cable gland to bring the supply cable in from the top or bottom as required. The enclosure base has four sealed cable entries with different pre-installed threads (three M25 and one M32). You simply push out the grommet of the desired entry for easy termination. You can also get sturdy glands for M32 and M25 cables from us as accessories.



# DUOi SWITCHED & INTERLOCKED

THE NEW SWITCHED AND INTERLOCKED WALL MOUNTED RECEPTACLE IN 16 AND 32 A WITH VOLTAGE INDICATOR.

 **MENNEKES**  
MY POWER CONNECTION

[HOME](#) [CONTENTS](#) [DUOi WALL MOUNTED RECEPTACLE](#) [INSTALLATION](#) [VOLTAGE INDICATOR](#) [OPERATION](#) [MATERIALS](#) [CONTACT PERSONS](#)

## Easy, time-saving installation

### Practical mounting plate

The mounting plate is removable for easy cable installation. The receptacle and switch disconnecter are on the mounting plate and come prewired. You can also easily remove the mounting plate with the receptacle and switch as a single unit at any time, for example to place them on a firm surface for maintenance work.



### Ingenious combination head screws

Each switched and interlocked DUOi wall mounted receptacle has four captive combination head screws with quick-screw double thread and interior drive ratchet. This lets you quickly and easily open and close the enclosure using an Allen key or flat-tip screwdriver. The combination head screws are made of plastic and therefore considerably more durable than metal screws.



# DUOi SWITCHED & INTERLOCKED

THE NEW SWITCHED AND INTERLOCKED WALL MOUNTED RECEPTACLE IN 16 AND 32 A WITH VOLTAGE INDICATOR.

 **MENNEKES**  
MY POWER CONNECTION

[HOME](#) [CONTENTS](#) [DUOi WALL MOUNTED RECEPTACLE](#) [INSTALLATION](#) [VOLTAGE INDICATOR](#) [OPERATION](#) [MATERIALS](#) [CONTACT PERSONS](#)

## Convenient voltage indicator



### Always keeping an eye on the operating status

Our switched and interlocked wall mounted receptacle DUOi comes with an LED voltage indicator. This is prominently positioned above the switch and shows you the current status of the device in a supply network of up to 3 phases. This way, you always have the operating status of the DUOi receptacle in front of you: When the outlet is switched on and operating in normal working mode, the indicator lights up green. When the outlet is switched off or an error occurs, the indicator goes out – allowing you to quickly react and promptly address any issues.

# DUOi SWITCHED & INTERLOCKED

THE NEW SWITCHED AND INTERLOCKED WALL MOUNTED RECEPTACLE IN 16 AND 32 A WITH VOLTAGE INDICATOR.

 **MENNEKES**  
MY POWER CONNECTION

[HOME](#) [CONTENTS](#) [DUOi WALL MOUNTED RECEPTACLE](#) [INSTALLATION](#) [VOLTAGE INDICATOR](#) [OPERATION](#) [MATERIALS](#) [CONTACT PERSONS](#)

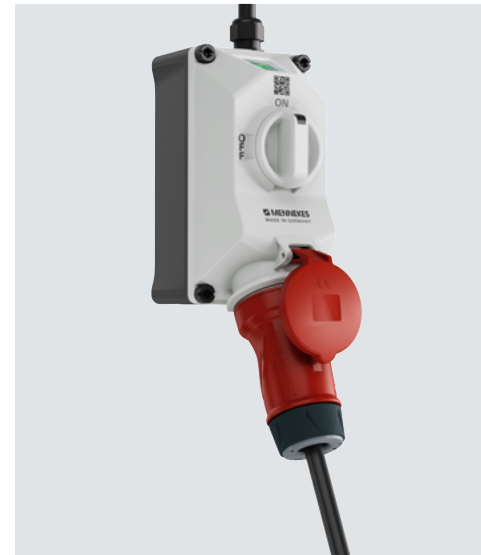
## Safe and easy operation

Whether you're an electrician who installs and services receptacles or a user, the safe, easy installation and operation of receptacles is essential. Our DUOi wall mounted receptacles deliver safety and convenience in two ways:



### DUO lock 1

Our DUOi wall mounted receptacles integrate a switch disconnecter with an easy-to-grip rotary switch. It's only possible to connect or disconnect a plug when the switch is in its OFF position—for your own safety.



### DUO lock 2

When a plug is in the receptacle, you can turn the switch to „ON“. This mechanically locks the receptacle to prevent the plug from being pulled out when it's carrying a live current. The result is safe, reliable power for your equipment and machines.

# DUOi SWITCHED & INTERLOCKED

THE NEW SWITCHED AND INTERLOCKED WALL MOUNTED RECEPTACLE IN 16 AND 32 A WITH VOLTAGE INDICATOR.

 **MENNEKES**  
MY POWER CONNECTION

[HOME](#) [CONTENTS](#) [DUOi WALL MOUNTED RECEPTACLE](#) [INSTALLATION](#) [VOLTAGE INDICATOR](#) [OPERATION](#) [MATERIALS](#) [CONTACT PERSONS](#)

## Safe and easy operation

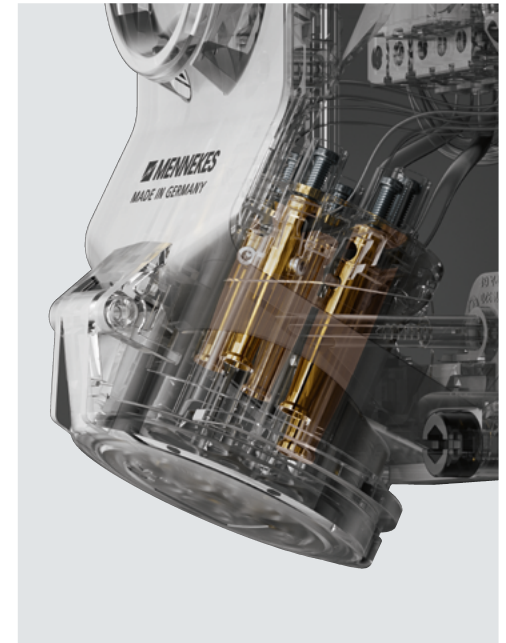


### Lockout/tagout padlock for additional protection

Do you need to play it absolutely safe? The selector knob of every DUOi wall mounted receptacle's switch has a hole for attaching your own lockout/tagout padlock. This gives you added safety by preventing the switch from being unintentionally turned on when a plug is in the receptacle. The result is complete safety, for example for carrying out maintenance tasks. It's impossible for current to be unintentionally delivered to machines or other equipment – essential for preventing accidents.

### Effortlessly connect and disconnect with X-CONTACT

The DUOi wall mounted receptacle features our X-CONTACT contact sleeve technology. The sleeves, which are made of a resilient flexible material, are slotted in an X pattern. When a plug is inserted, its pin expands the opening in the contact sleeve. The plug and receptacle are thus securely joined. It's also especially easy to connect and disconnect a plug – as much as 50% less force is required.





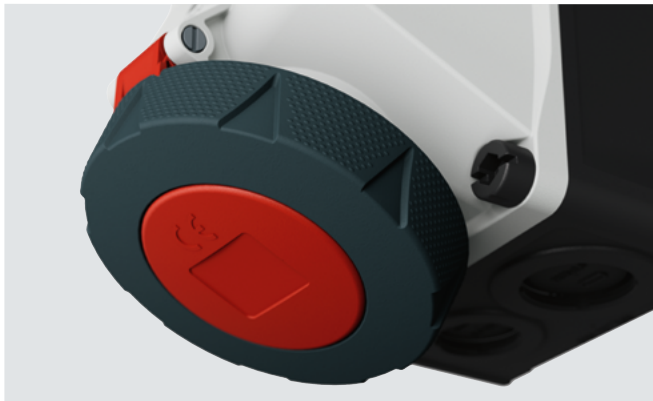
# DUOi SWITCHED & INTERLOCKED

THE NEW SWITCHED AND INTERLOCKED WALL MOUNTED RECEPTACLE IN 16 AND 32 A WITH VOLTAGE INDICATOR.

**MENNEKES**  
MY POWER CONNECTION

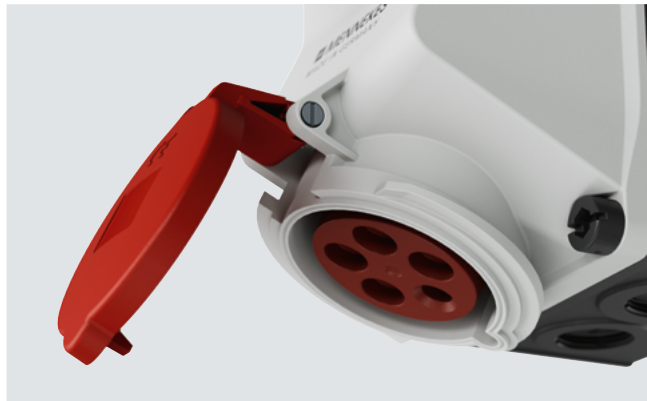
[HOME](#) [CONTENTS](#) [DUOi WALL MOUNTED RECEPTACLE](#) [INSTALLATION](#) [VOLTAGE INDICATOR](#) [OPERATION](#) [MATERIALS](#) [CONTACT PERSONS](#)

## Safe and easy operation



### Greater safety thanks to a nubbed and rubberised hinged lid (with IP67 / IP69 ingress protection)

Our DUOi wall mounted receptacles which deliver IP67 / IP69 ingress protection, are equipped with a pimpled rubberised hinged cap. It's extremely easy to grab and hold, even in moist or wet conditions, for easy opening and closing.



### Practical aperture with hinged lid

For comfortable use and reliable operation without mishaps: the receptacle's hinged cap is easy to open and close. It opens upward instead of toward the wall. This prevents collisions with connected cables and cable glands.



### Quick availability of product information via QR code

Product information must be available for electricians and users. By scanning the centrally applied QR code, installation and operating instructions, accessories or spare parts, declarations of conformity and other important documents relating to the product are directly available at any time.

# DUOi SWITCHED & INTERLOCKED

THE NEW SWITCHED AND INTERLOCKED WALL MOUNTED RECEPTACLE IN 16 AND 32 A WITH VOLTAGE INDICATOR.

**MENNEKES**  
MY POWER CONNECTION

HOME CONTENTS DUOi WALL MOUNTED RECEPTACLE INSTALLATION VOLTAGE INDICATOR OPERATION MATERIALS CONTACT PERSONS

## Robust, durable materials



### For all situations and years of use

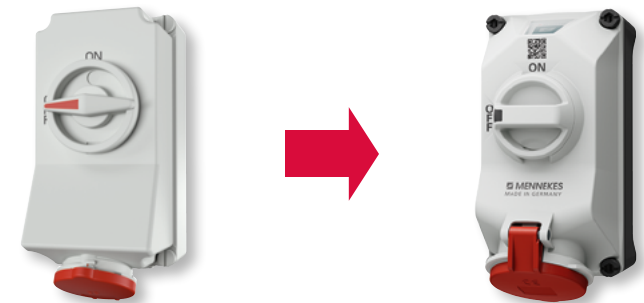
The enclosure of our DUOi wall mounted receptacles are made of high-quality plastic. They are available in your choice of material: engineering thermoplastic or plastic that is resistant to chemical attack. The materials used are break- and impact-resistant, highly electrically insulating, and impervious to heat and cold. The special plastic used also provides protection from aggressive substances such as chemicals, oils, fats, alkaline, and saltwater.

Depending on the version, our DUOi wall mounted receptacles have IP44 or IP67 / IP69 ingress protection and foamed seals. This reliably protects them from splash water, dust, and penetration by small foreign bodies and water.

This way you get a product that is extremely robust and weatherproof and will perform reliably for many years.

### Simply replace the existing DUO with the new one

The bases of our wall mounted receptacles have standard dimensions that match those of the older DUO models. This lets you easily replace existing DUO wall mounted receptacles with new models.



# DUOi SWITCHED & INTERLOCKED

THE NEW SWITCHED AND INTERLOCKED WALL MOUNTED RECEPTACLE IN 16 AND 32 A WITH VOLTAGE INDICATOR.

## Contact persons at MENNEKES



Do you have questions about our solutions and products?  
You can find our contact persons on our website:

